

Calm Bays

Maloneys Beach: north of Batemans Bay. Access from Maloneys Drive and Hibiscus Close.

Long Beach: access from Bay Road, off Longbeach Road

Surfside: access from Myamba Parade

Corrigans Beach, Batehaven: access from Beach Road

Caseys Beach: access from Beach Road,

Barlings Beach, North end Tomakin:

access from George Bass Drive, turn left into Ainslie Parade, then turn right into Red Hill Parade.

Broulee Beach: access from Coronation Drive

Tomakin Cove, South end: access from Sunpatch Parade and Kingston Place

Candlagan Creek, Mossy Point:

access from Annetts Parade

Bar Beach, Narooma: heading north, access from Princes Highway, turn into Centenary Drive 200m after Narooma Bridge, follow road around to beach

Mystery Bay: from Princes Highway. Turn off at Mystery Bay Road and follow road down to beach.

SAFETY SIGNS



Strong Current



Danger no Swimming



Bluebottles



No Surfcraft



High Surf



eurobodalla

Land of many waters
South Coast NSW

eurobodalla south coast nsw

Beaches

Nelligen, South Durras, Batemans Bay, Mogo, Broulee, Moruya, Tuross Head, Bodalla, Narooma, Montague Island, Central Tilba and Tilba Tilba.

Batemans Bay Visitor Centre

Princes Highway, Batemans Bay 2536

Phone: 02 4472 6900

Narooma Visitor Centre

Princes Highway, Narooma

Phone: 02 4476 2881

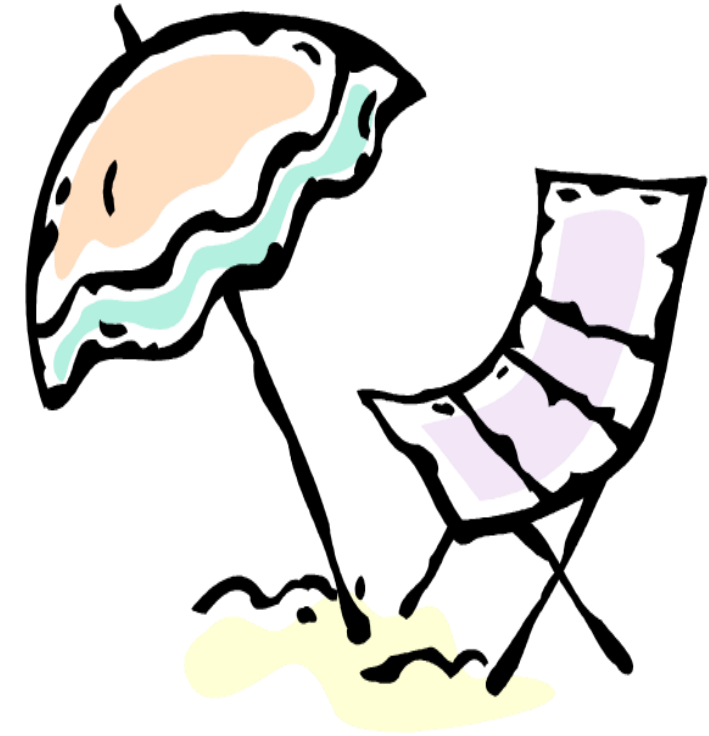
For more ideas on holidaying in Eurobodalla or to book your accommodation and tours, talk to one of our friendly staff on FREECALL

1800 802 528

www.eurobodalla.com.au

Beach Safety Guide

www.surflifesaving.com.au



batemans bay | moruya
narooma | surrounding districts



Surfing Beaches

South Durras: north of Batemans Bay, turn into Durras Road

Malua Bay: access from George Bass Drive, turn into Kuppa Avenue

McKenzies Beach: access from George Bass Drive, south of Malua Bay

Tomakin Beach: access from Sunpatch Parade and Kingston Place

Broulee Beach: park in Coronation Drive

Moruya Heads: take South Head Road from Princes Highway at Moruya

Congo: access from Princes Highway, turn onto Bingi Road then Congo Road

One Tree Point, Tuross Head: access from Tuross Boulevard

Jemisons Beach, Potato Point: from Princes Highway, turn left at Potato Point Road, then right at Deraquin Street, Deraquin Street turns left and becomes

Borang Street follow that until the end

Dalmeny Beach: from Mort Avenue, turn left opposite IGA Dalmeny and follow road around the headland to Dalmeny Beach

Yabbara Beach, Dalmeny: access from Ocean Parade

Duesbury Beach, Dalmeny: access from carpark in Ocean Parade

Kianga Reef: access from Dalmeny Drive, turn east directly across from Antons

Carters Beach, Kianga: access from carpark off Centenary Drive

Narooma Break wall, Bar Beach: from Princes Highway, turn onto Centenary Drive

1080, Mystery Bay: access from Mystery Bay Road, turn right into Lamont Young Drive then left at 1080 Beach sign. Follow unsealed road right down to beach.

Patrolled Beaches

Beach	Patrol Dates	Days of Service	Patrol Times
Surf Beach	21/12/11 - 29/01/12	7 days	9am - 5pm
Tuross	21/12/11 - 29/01/12	7 days	9am - 5pm
Dalmeny	21/12/11 - 29/01/12	7 days	9am - 5pm
Malua Bay (Batemans Bay SLSC)	21/12/11 - 29/01/12	7 days	9am - 5pm
Broulee	21/12/11 - 29/01/12	7 days	9am - 5pm
Moruya	21/12/11 - 29/01/12	7 days	9am - 5pm
Narooma	21/12/11 - 29/01/12	7 days	9am - 5pm

Professional lifeguards will be on the sand of seven Eurobodalla beaches for 6 weeks from this Wednesday 21 December 2011.

The seven beaches that will be patrolled until Sunday 29 January 2012 are Surf Beach, Malua Bay, Broulee, Moruya, Tuross Head, Dalmeny and Narooma.

The professional lifeguards will be on patrol on each beach from 9am - 5pm Mondays to Fridays and also on Saturdays and Sundays at the non-surf club beaches of Surf Beach, Dalmeny and Tuross Head.

On Saturdays and Sundays starting this weekend until 25 April 2012, volunteer lifesavers will patrol the surf club beaches of Malua Bay (Batemans Bay SLSC), Broulee, Moruya and Narooma. For more information on these voluntary patrols, visit

Leisurely Snorkelling and Diving

Note: Please check the Marine Park map for up to date information on zoning.

Corrigans Beach (Batehaven)
Casey's Beach Sunshine Bay
Wimbie Beach (Beside Surf Beach)
Guerilla Bay
Broulee Beach—North & South
Congo
Dalmeny
Mystery Bay
Wagonga Inlet near breakwall

Rock Pools

Denhams Beach
Surf Beach
Wimbie Beach
Broulee (In calm weather, low tide)
Yabbara Beach (Southern end)
Bogola Head (South from Handkerchief Beach)

Learn To Surf

Broulee Surf School
Soulrider Surf School
Surf The Bay Surf School
Total Eco Adventures